

Volna Life residential complex

Location **Iskele, Long Beach**



About the project



Developer	Cebargos
Start of sale	01.09.2022
Key handover	2025
Houses/blocks	3
Building floor	2 2 Min Max
Units total	12 - 1+1, 12 - 2+1

Distance to the sea - 1900 m
 Distance to key locations:
 Airport 45 min. Supermarket 2 min. Pharmacy 2 min. School 11 min. Kindergarten 10 min. Hospital 6 min.

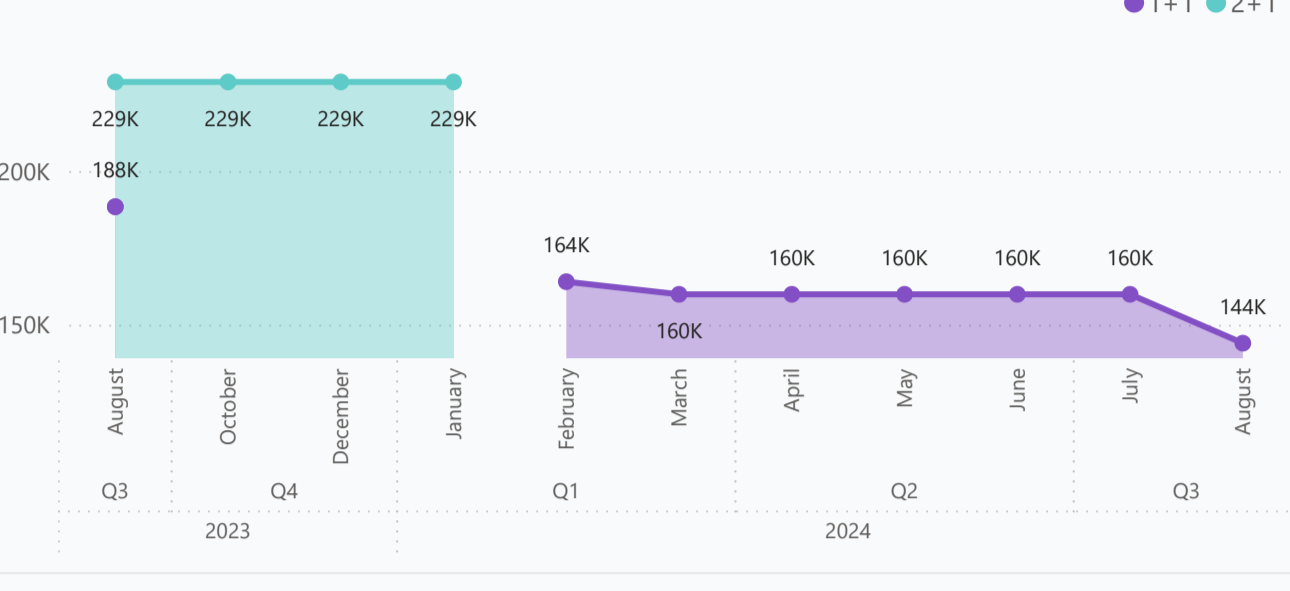
Volna Life is an exquisite collection of investment properties nestled along the stunning Long Beach in North Cyprus. As an embodiment of exceptional living and promising investment, Volna Life represents the epitome of coastal luxury. Each residence has been meticulously designed to offer comfortable and modern living spaces, boasting stunning views of the azure Mediterranean Sea. Volna Life combines contemporary architecture with the serenity of nature. Experience peace of mind with projects' state-of-the-art fire safety measures, prioritizing safety of the residents at every step. The infrastructure is equipped with ample parking spaces to accommodate guests with ease.

Complex infrastructure

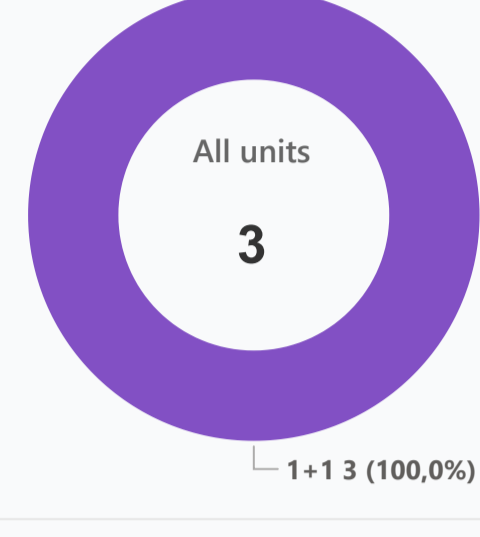
- Parking
- Restaurant
- Roof bar
- Rooftop poo.
- Shops

Available units **3** / 24 total

Median price per unit, K GBP



Structure of available units



Plans



1+1

Payment plans

Deposit (non-refundable) 5 %

Option	Down payment	Installments months	Discount	Offer
Option 1	35 %	40% - till key 20...	-	-
Option 2	-	-	-	-
Option 3	-	-	-	-
Option 4	-	-	-	-

Special offer

Fully furnished design package

Rental guarantee

Trafo 2000 GBP

Resale after 50%

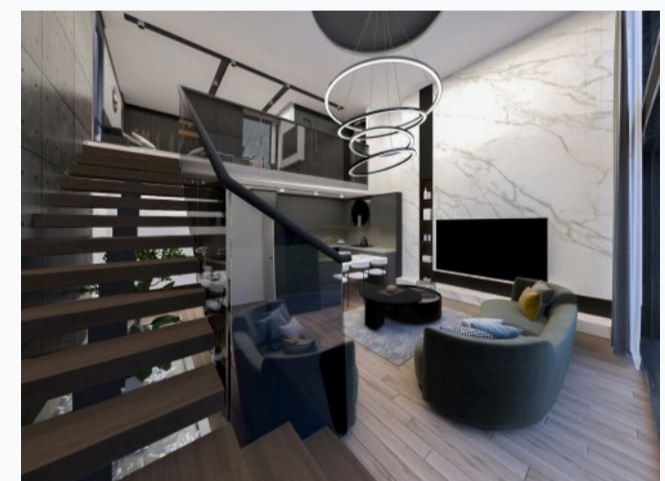
Maintenance fee -

Rental services -

Details

Bedrooms	Subtype	Block	Unit №	Floor	View	Bathroom	Internal area, sq. m	Balcony/ Terrace, sq. m	Rooftop terrace, sq. m	Garden, sq. m	Gross covered area, sq. m	Current price, GBP	Price per sqm, GBP
1+1	Flat	RC	5	01			65		55		120	144 000	1 200
1+1	Flat	RC	6	01			65		55		120	144 000	1 200
1+1	Flat	RC	8	01			65		55		120	144 000	1 200

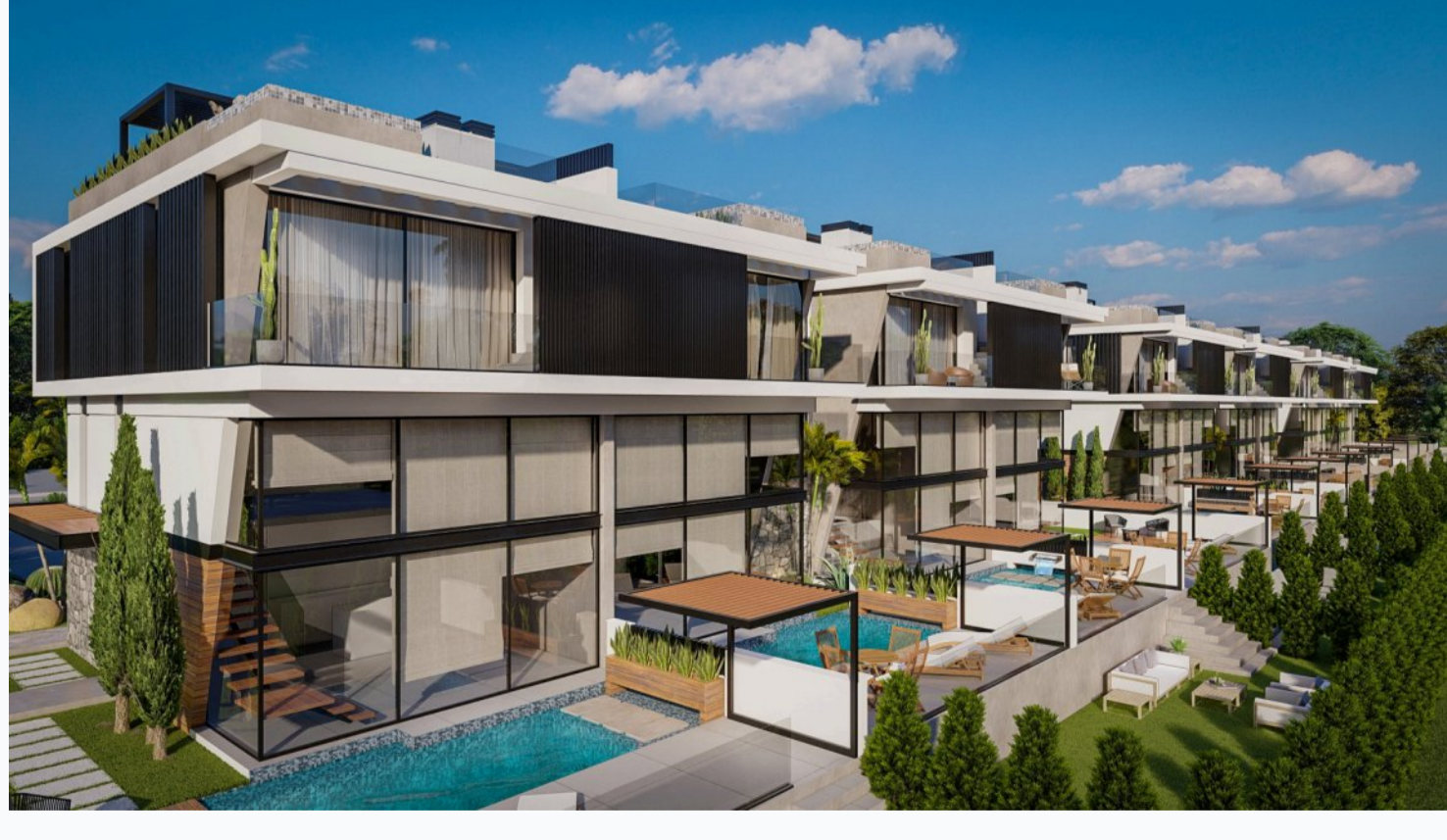
Interior specification



Interior specification

- Ceramic flooring
- Double glazed windows
- Laminate flooring in the bedrooms
- Steel ladder with wood step
- Toilet integrated in the walls

Exterior specification



Exterior specification

- Glass fence balcony
- Private Garden
- Private pool
- Terracing with inbuilt lighting & power sockets

Location of complex

